

## Whole Education

- Evaluate My School – Action Plan, reviewed by SEND experts.
- Whole School approaches to SEND
- Annual CPD offer for all teaching roles.
- Professional Leadership Development beyond the role of SENDCO.
- Supports Strategic leadership of SEND.
- Digital network, webinars and resources.
- Regional events for MAT and school leaders.

# INCLUSION

## A Strategy of Support for United Learning Schools



## Disadvantaged

- Expectation Framework.
- Focused First Pupils.
- Ensuring non-academic challenges are reduced and academic outcomes rise.
- Senior Leadership Strategy.
- Governor oversight.
- Diagnostic assessment.
- Equity of offer.

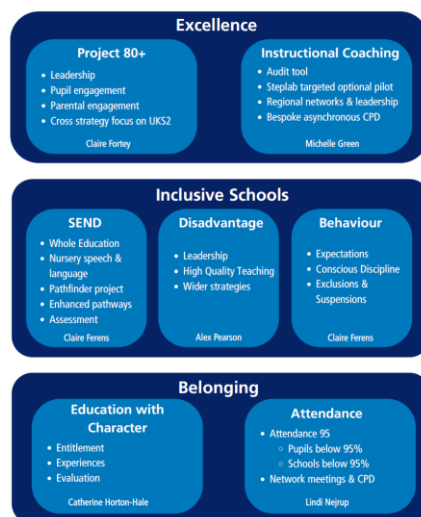
### Key HITs:

- Flexible seating plans.
- Pre Teaching.
- Dynamic Feedback.
- Direct Vocabulary Instruction.

## Pathfinder PedTech

- Pedagogy first – purpose.
- Intentional use of technology – accelerated learner outcomes.
- Positive impact on confidence, engagement and ALL learners.
- Equity and Inclusion – All learners benefit.
- Evidence based.
- Stronger sense of belonging and inclusion.
- Enhanced teacher confidence and fulfilment.
- Improved classroom efficiency and workflow.

## Primary School Improvement 2025-26



## Behaviour

- Expectation Framework.
- Behaviour & Relationship policy.
- HT Strategy Group

### Routines

- Staff training to achieve 100% compliance.
- Mapped routines, visuals and videos.
- Disruption free learning.

### Conscious Discipline

- Safety.
- Connection.
- Restorative problem solving.
- Brain State Model.

## Regional Inclusion Leads

- Work alongside Regional Director – Inclusion.
- Support a cluster of local schools.
- Regular cluster network meetings with agreed agenda of support.
- Evaluate My School Action Plan directs key areas of focus and support.
- Sharing of excellence and great practice.
- Critical friend and sense checker or supervision.
- Leadership development from experts such as Gary Aubin.

## Cross Strategy Working

- Attendance – Support for those with attendance below 95%.
- Early Years – Wellcomm screening in Nursery and Reception.
- Assessment – recognition of success and progress for SEND learners.
- Enhanced Pathways – Quality internal provision to support the highest needs.
- Instructional Coaching – focus on high impact teaching strategies to support QFT and Adaptive Teaching.
- Asynchronous Training provided by Subject Advisors and Regional Directors to support schools.
- RWM combined focus through Project 80+.

## Belonging

### Education with Character

- Expectations Framework.
- Pupil charter expectation for all pupils.
- Nurturing the whole individual.
- Emphasises academic and personal growth.
- Group wide events such as Magic Flute and Story Slam.
- 'Above and Beyond' offer to further enhance personal development of pupils.
- Pupils engage in artistic, creative, performance, and sporting activities, discovering and developing their talents.